



PROTUFF

SURFACE TOLERANT EPOXY

Treatment plants are steel, chemicals and lots of water. Corrosion is a constant battle with the loss of assets and safety issues in the balance. **Stop it effectively and economically.**

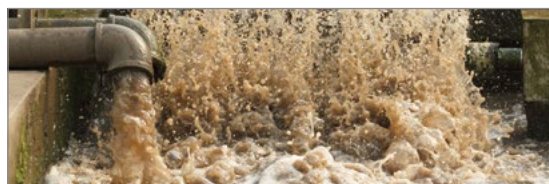
If you have a lot of painting to do at your plant...



You don't have a lot of...



Damp surfaces are always a problem...



PROTUFF

SURFACE TOLERANT EPOXY

- PROTUFF 2225 ALUMINUM MASTIC EPOXY
- PROTUFF 2215 EPOXY MASTIC PRIMER
- PROTUFF 3300 EPOXY MASTIC COLORS

And your steel looks like this...



PROTUFF Series of epoxy coatings allows you to save time in surface preparation by avoiding the expense and hazard of abrasive blasting. Apply directly to hand or power-tool cleaned steel and recoat or place steel back in service within hours, not days.

PROTUFF Epoxy Mastics are formulated and tested to allow application over damp surfaces and in dew point conditions. Coat directly after washing or even below the dew point number, keeping production on schedule and extra dollars from being spent.

PROTUFF Materials are also low-temperature cure, allowing for Fall and Winter applications when plant demands or lessened and contractor rates are lower.

- Apply over corroded steel
- Apply over damp substrates
- Brush, roll or spray
- Apply at temperatures as low as 20F/-6C
- Superior bonding
- PROTUFF 3300 is also available in colors for coding your pipe

THEN YOU NEED PROTUFF!



To access product data sheets or schedule a review and estimate for coating your steel scan the QR or go directly to our web site.



020115